

# Supported Audio Interfaces for DAD version 8+

## Overview

This document is to be used as a general reference for commonly used audio cards that are supported within DAD.

All references to 'Play Streams' refer to the number of simultaneous stereo audio streams out of a single output. One should note that most cards can play three or more streams per output. Some cards are limited to only two audio streams per output. Also, most audio cards have the ability to play discreet Left or Right audio streams unless otherwise noted.

Users should note, the following factors will affect audio card performance:

- Audio card drivers
- Machine performance
- Software versions
- Software configuration

Additionally, the number of streams per output will be affected by the following:

- Sample Rate
- Audio format
- Bit Rate



ASI 6514 / 6614

ANALOG/DIGITAL PHYSICAL I/O	BUS	STEREO OUTPUTS	STEREO INPUTS
ANALOG	PCI	4	1
DIGITAL	PCI-e	4	1

**NOTES:**  
 ASI-6514 is the PCI version.  
 ASI-6614 is the PCI-express version.  
 Has a Sample Rate Converter and Stretch and Shrink support.  
 Discreet Left and Right record streams are not permitted.

Sample Rates	Formats	Play Streams	DAD Version	Audio Driver	Other Notes
32, 44.1, 48 KHz	PCM, MP3, MPEG 2	3	5.0.D+	3.04.03+	Requires use of a DAD Mixer file



ASI 6520 / 6620

ANALOG/DIGITAL PHYSICAL I/O	BUS	STEREO OUTPUTS	STEREO INPUTS
ANALOG	PCI	2	2
DIGITAL	PCI-e	0	0

**NOTES:** *This card replaces the ASI 6012 audio card.*  
 ASI-6520 is the PCI version.  
 ASI-6620 is the PCI-express version.  
 Has a Sample Rate Converter and Stretch and Shrink support.  
 Discreet Left and Right record streams are not permitted.

Sample Rates	Formats	Play Streams	DAD Version	Audio Driver	Other Notes
32, 44.1, 48 KHz	PCM, MP3, MPEG 2	3	5.0.D+	3.04.03+	Requires use of a DAD Mixer file



ASI 6522 / 6622

ANALOG/DIGITAL PHYSICAL I/O	BUS	STEREO OUTPUTS	STEREO INPUTS
ANALOG	PCI	2	2
DIGITAL	PCI-e	2	2

**NOTES:** *This card replaces the ASI 6022 audio card.*  
 ASI-6522 is the PCI version.  
 ASI-6622 is the PCI-express version.  
 Has a Sample Rate Converter and Stretch and Shrink support.  
 Discreet Left and Right record streams are not permitted.

Sample Rates	Formats	Play Streams	DAD Version	Audio Driver	Other Notes
32, 44.1, 48 KHz	PCM, MP3, MPEG 2	3	5.0.D+	3.04.03+	Requires use of a DAD Mixer file



**ASI 6540 / 6640**

ANALOG/DIGITAL PHYSICAL I/O	BUS	STEREO OUTPUTS	STEREO INPUTS
ANALOG	PCI PCI-e	4	4
DIGITAL		0	0

**NOTES:**

ASI-6540 is the PCI version.  
ASI-6640 is the PCI-express version.

Has a Sample Rate Converter and Stretch and Shrink support.  
Discreet Left and Right record streams are not permitted.

Sample Rates	Formats	Play Streams	DAD Version	Audio Driver	Other Notes
32, 44.1, 48 KHz	PCM, MP3, MPEG 2	3	5.0.D+	3.04.03+	Requires use of a DAD Mixer file



**ASI 6544 / 6644**

ANALOG/DIGITAL PHYSICAL I/O	BUS	STEREO OUTPUTS	STEREO INPUTS
ANALOG	PCI PCI-e	4	4
DIGITAL		4	4

**NOTES:**

ASI-6544 is the PCI version.  
ASI-6644 is the PCI-express version.

Has a Sample Rate Converter and Stretch and Shrink support.  
Discreet Left and Right record streams are not permitted.

Sample Rates	Formats	Play Streams	DAD Version	Audio Driver	Other Notes
32, 44.1, 48 KHz	PCM, MP3, MPEG 2	3	5.0.D+	3.04.03+	Requires use of a DAD Mixer file



**ASI 6518 / 6618**

ANALOG/DIGITAL PHYSICAL I/O	BUS	STEREO OUTPUTS	STEREO INPUTS
ANALOG	PCI PCI-e	8	1
DIGITAL		8	1

**NOTES:**

ASI-6518 is the PCI version.  
ASI-6618 is the PCI-express version.

Has a Sample Rate Converter and Stretch and Shrink support.  
Discreet Left and Right record streams are not permitted.

Sample Rates	Formats	Play Streams	DAD Version	Audio Driver	Other Notes
32, 44.1, 48 KHz	PCM, MP3, MPEG 2	2	5.0.D+	3.04.03+	Requires use of a DAD Mixer file



ANALOG/DIGITAL PHYSICAL I/O	BUS	STEREO OUTPUTS	STEREO INPUTS
ANALOG	PCI	0	0
DIGITAL		8	8

**NOTES:**  
 ASI Card interface for AXIA Livewire.  
 Provides 8 Stereo Livewire sources and 8 Stereo Livewire destinations.

Sample Rates	Formats	Play Streams	DAD Version	Audio Driver	Other Notes
32, 44.1, 48 KHz	PCM, MP3, MPEG 2	2x8 3x4	5.0.D+	3.04.03+	Requires use of a DAD Mixer file



ANALOG/DIGITAL PHYSICAL I/O	BUS	STEREO OUTPUTS	STEREO INPUTS
ANALOG	PCI	4*	4*
DIGITAL		4*	4*

**NOTES:**  
 MultiChannel 5.1 and 7.1 support.  
 No Stretch or Shrink \*\*Cannot mix Sample Rates

\* **ASI5041** - 4 stereo inputs and 4 stereo outputs, AES/EBU digital only.  
 \* **ASI5042** - 4 stereo inputs and 4 stereo outputs, analog only.  
 \* **ASI5044** - 4 stereo inputs and 4 stereo outputs, analog and AES/EBU.

Sample Rates**	Formats	Play Streams	DAD Version	Audio Driver	Other Notes
32, 44.1, 48 KHz	PCM	3	5.0.D+	3.04.03+	Support is within DAD, no Mixer file needed



ANALOG/DIGITAL PHYSICAL I/O	BUS	STEREO OUTPUTS	STEREO INPUTS
ANALOG	PCI	1	1
DIGITAL		1	1

**NOTES:**

Sample Rates	Formats	Play Streams	DAD Version	Audio Driver	Other Notes
32, 44.1, 48 KHz	PCM	4	5.0.D+	3.04.03+	Requires use of a DAD Mixer file



ANALOG/DIGITAL PHYSICAL I/O	BUS	STEREO OUTPUTS	STEREO INPUTS
ANALOG	PCI	2	2
DIGITAL		0	0

**NOTES:**

Sample Rates	Formats	Play Streams	DAD Version	Audio Driver	Other Notes
32, 44.1, 48 KHz	PCM	3	5.0.D+	3.04.03+	Requires use of a DAD Mixer file



ANALOG/DIGITAL PHYSICAL I/O	BUS	STEREO OUTPUTS	STEREO INPUTS
ANALOG	PCI	2	1
DIGITAL	PCI-e	2	1

**NOTES:**

Has Stretch and Shrink support.

PCX-442HR is the PCI version.  
PCX-442e is the PCI-express version.

Sample Rates	Formats	Play Streams	DAD Version	Audio Driver	Other Notes
32, 44.1, 48 KHz	PCM, MP3, MPEG 2	5	8.1.A+	HRRuntime 1.72c001+	



ANALOG/DIGITAL PHYSICAL I/O	BUS	STEREO OUTPUTS	STEREO INPUTS
ANALOG	PCI	4	4
DIGITAL	PCI-e	4	4

**NOTES:**

Has Stretch and Shrink support.

Supports Surround Sound through WDM driver.

PCX-882HR is the PCI version.  
PCX-882e is the PCI-express version.

Sample Rates	Formats	Play Streams	DAD Version	Audio Driver	Other Notes
32, 44.1, 48 KHz	PCM, MP3, MPEG 2	5	8.1.A+	HRRuntime 1.72c001+	DAD Mixer file required for Surround Sound



ANALOG/DIGITAL PHYSICAL I/O	BUS	STEREO OUTPUTS	STEREO INPUTS
ANALOG	PCI	0	0
DIGITAL	PCI-e	4	4

**NOTES:**

Has Stretch and Shrink support.

Supports Surround Sound through WDM driver.

PCX-881HR is the PCI version.  
PCX-881e is the PCI-express version.

Sample Rates	Formats	Play Streams	DAD Version	Audio Driver	Other Notes
32, 44.1, 48 KHz	PCM, MP3, MPEG 2	5	8.1.A+	HRRuntime 1.72a001+	DAD Mixer file required for Surround Sound



ANALOG/DIGITAL PHYSICAL I/O	BUS	STEREO OUTPUTS	STEREO INPUTS
ANALOG	PCI	1	1
DIGITAL	PCI-e	1	1

**NOTES:**

Has Stretch and Shrink support.  
 PCX-924HR is the PCI version.  
 PCX-924e is the PCI-express version.

Sample Rates	Formats	Play Streams	DAD Version	Audio Driver	Other Notes
32, 44.1, 48 KHz	PCM, MP3, MPEG 2	5	8.1.A+	HRRuntime 1.61a015+	



ANALOG/DIGITAL PHYSICAL I/O	BUS	STEREO OUTPUTS	STEREO INPUTS
ANALOG	PCI	6	1
DIGITAL	PCI-e	6	1

**NOTES:**

Has Stretch and Shrink support.  
 Supports Surround Sound through WDM driver.  
 PCX-1222HR is the PCI version.  
 PCX-1222e is the PCI-express version.

Sample Rates	Formats	Play Streams	DAD Version	Audio Driver	Other Notes
32, 44.1, 48 KHz	PCM, MP3, MPEG 2	5	8.1.A+	HRRuntime 1.70a001+	Requires Mix file for Surround sound operation.

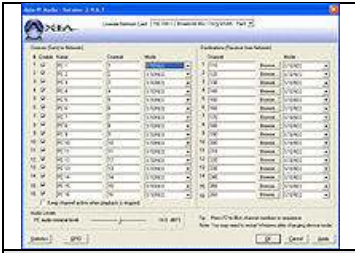


ANALOG/DIGITAL PHYSICAL I/O	BUS	STEREO OUTPUTS	STEREO INPUTS
ANALOG	PCI	0	0
DIGITAL	PCI-e	6	1

**NOTES:**

Has Stretch and Shrink support.  
 Supports Surround Sound through WDM driver.  
 PCX-1221HR is the PCI version.  
 PCX-1221e is the PCI-express version.

Sample Rates	Formats	Play Streams	DAD Version	Audio Driver	Other Notes
32, 44.1, 48 KHz	PCM, MP3, MPEG 2	5	8.1.A+	HRRuntime 1.70a001+	Requires Mix file for Surround sound operation.



IP Audio Driver

ANALOG/DIGITAL PHYSICAL I/O	BUS	STEREO OUTPUTS	STEREO INPUTS
ANALOG	IP	8*	4*
DIGITAL		8*	4*

**NOTES:**

\*Analog and AES/EBU Input and Output depend on Audio Node interfaces purchased with the system.

IP Audio option required on the DAD Security Key

Sample Rates	Formats	Play Streams	DAD Version	Audio Driver	Other Notes
32, 44.1, 48 KHz	PCM, MPEG 2	8 user defined	5.1.D+	2.4.8.2	Requires DAD Mixer file for operation